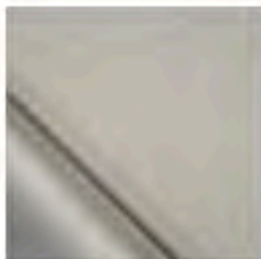
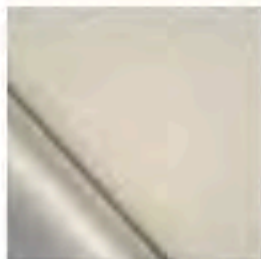


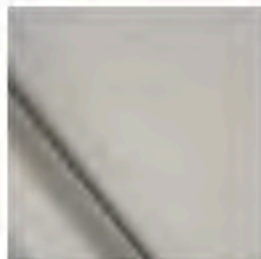
# Eco-sustainable Fabrics



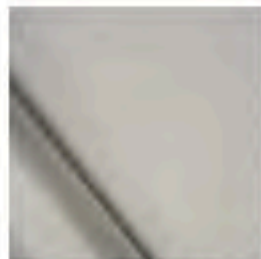
Matrix Fabric: 2%



Matrix Fabric: 5%



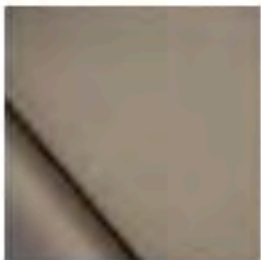
Apex Reflect Fabric: 2-3%



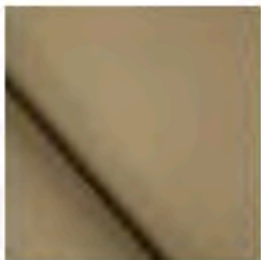
Apex Reflect Fabric: 4-5%



Apex View Fabric: 2-3%



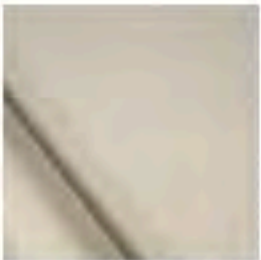
Apex View Fabric: 4-5%



EPT 301 AC Fabric



ELT 303 Fabric

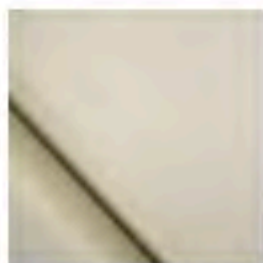


Summit Privacy Fabric



Summit Reflect Fabric

# Opaque Fabrics



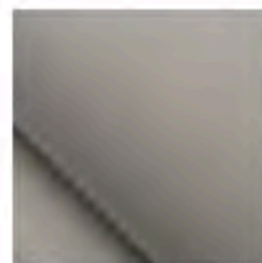
Apex Opaque Fabric



Basket Opaque Fabric



Denim Opaque Fabric



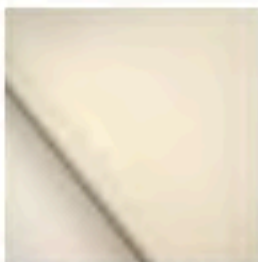
EZ 900 Fabric



Flicker Opaque Fabric



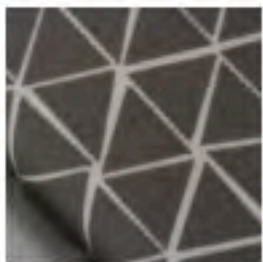
Lattice Opaque Fabric



Satin Opaque Fabric



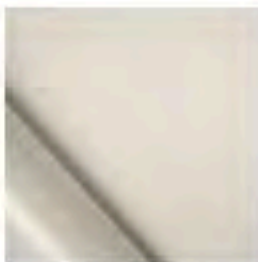
Splendor Fabric



Trilogy Fabric



Vinyl 4 Ply Fabric



Vinyl 4 Ply Wide Fabric



Wool Opaque Fabric

# Privacy Fabrics



Basket Privacy Fabric



Bling Fabric



Cottonwood Fabric



Denim Privacy Fabric



Glow Fabric



Lavish Fabric



Matisse Fabric



Merino Fabric



Mist Fabric



Petals Fabric



Rococo Fabric



Satin Privacy Fabric

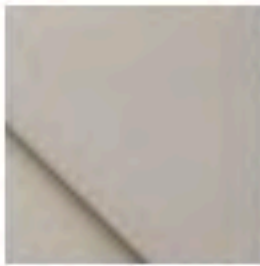


Splendor Fabric -  
Porcelain



Wool Privacy Fabric

# Sun Screen Fabrics



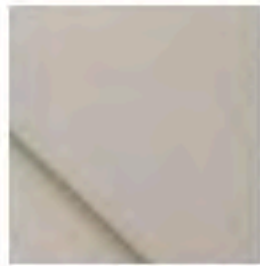
CS 101 Fabric: 1%



CS 103 Fabric: 3%



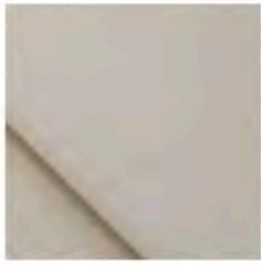
CS 103 Reflective Fabric:  
3%



CS 105 Fabric: 5%



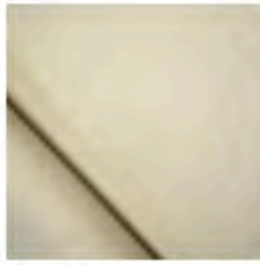
DX 201 Fabric: 1%



DX 203 Fabric: 3%



Berber Fabric

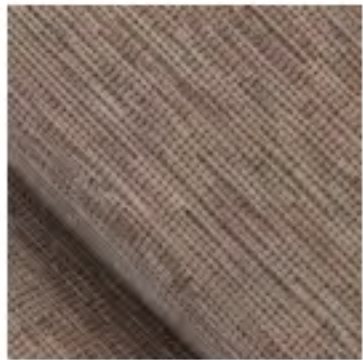


Bubble Fabric



Gabardine Fabric

# Translucent Fabrics



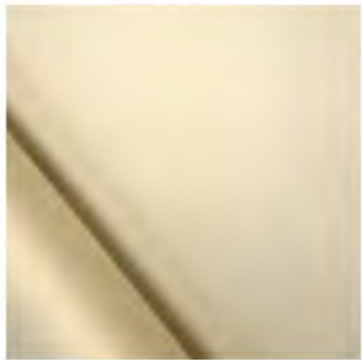
Earth2 Fabric



Flicker Translucent Fabric



Lattice Translucent Fabric

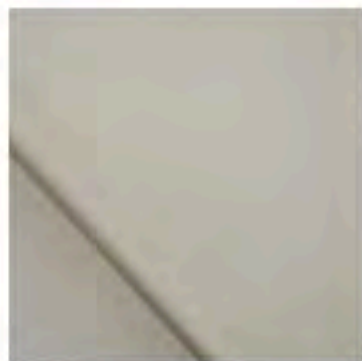


York Solid Fabric

# Transparent Fabrics



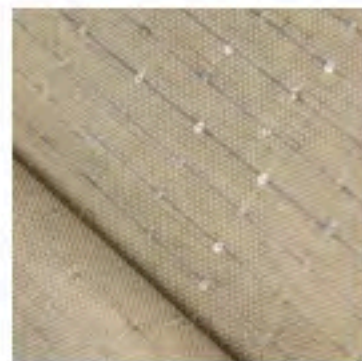
Bali Fabric



Boardwalk Fabric



Linen Fabric



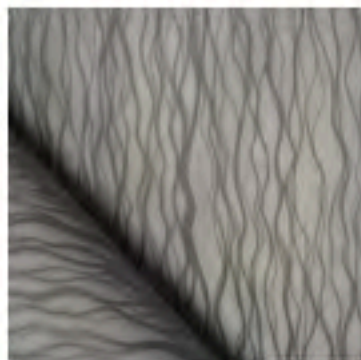
Paper Fabric - Pearl  
Finish



Reed Fabric



Watercolour Fabric



Wave Fabric